

## The high-performance certified explosive detection system large airports have been waiting years for...

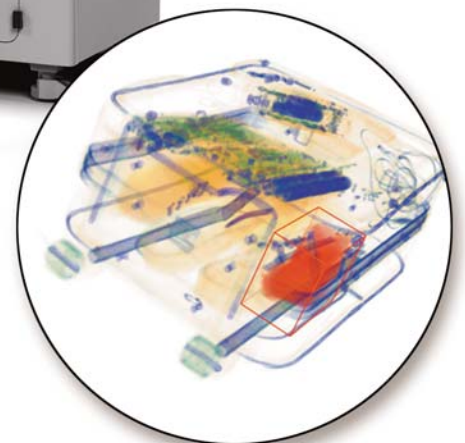
The revolutionary eXaminer XLB is the first certified Explosives Detection System (EDS) specifically optimized for screening checked baggage at large airports. In addition to receiving TSA Certification for both 100% threat mass and 75% threat mass detection standards, the XLB has passed European Union Standard 3 under the European Civil Aviation Conference (ECAC) Common Evaluation Program (CEP). Capable of scanning up to 1200 bags per hour (in-line), it keeps bags continuously moving through a meter-wide CT scanner at an unprecedented speed of 0.34 meters per second. Combining high-resolution helical CT with dual-energy imaging, the XLB meets the latest rigorous detection standards and provides the most advanced 3-D imaging.

Featuring industry-leading 3-D Continuous Flow CT Technology, the eXaminer XLB quickly and accurately scans entire bags and automatically assesses explosive threats. Operators can

view 3-D images of alarmed bags in their entirety or individual threat objects from any angle to help resolve alarms quickly and confidently.

The eXaminer XLB retains the footprint of the eXaminer 3DX, allowing for easy installation and integration with current baggage handling systems. An innovative brushless power and data transfer system improves reliability and reduces preventative maintenance downtime. Flexible networking options link hold baggage systems of any configuration (SX, 3DX, XLB and MVT-HR) with their respective viewing systems and search workstations over a secure network. Workflow management features optimize staff utilization, enabling airports to realize the lowest possible staffing and operating costs.

The eXaminer XLB is the highest-performance in-line CT EDS available—delivering reliable threat detection and exceptionally fast baggage processing with fewer bags sent to costly secondary search.



### CONFIGURATIONS

- Fully Integrated



## TECHNICAL SPECIFICATIONS

### GENERAL

Tunnel Opening: 1000 mm (39.4") W x 592 mm (23.3") H

System Dimensions:  
528 cm (208") L x 224 cm (88.2") H x 228 cm (90") W

Conveyor Belt Height:  
947.7 mm (37.3")

Conveyor Speed: 34 cm/sec (13.4 in/sec)

Conveyor Capacity:  
136 kg (300 lbs)

Max Bag Size: 1000 mm W (39.4") x 592.2 mm (23.3") H

Max Bag Length: 1.6 m (63")

Operational Throughput:  
1200 bags/hour

Power Requirements:  
480 VAC ±10%, 50-60Hz, 3ø, 50 FLA

### PHYSICAL SPECIFICATIONS - Weights

Scanner: Approx. 5,035 kg (11,100 lbs)

Inline Entry/Exit Tunnel:  
Approx. 771 kg (1,700 lbs)

### X-RAY

Dual Monoblock and Dual Energy:  
90 kV, 40 mA  
180 kV, 20 mA

Duty Cycle: 100%

Cooling: Oil-filled

X-ray Sensor: Solid-state detectors; 3-D Continuous Flow helical computed tomography

### IMAGING AND PERFORMANCE

Video Resolution:  
Dual 1600 x 1200 high-resolution, flat panel LCD monitors

Image Display:  
High-resolution 2-D and 3-D images  
Enhanced 3-D full bag scan in a single pass  
Full 3-D bag/threat object views  
3-D full image and threat object rotation

### EDS FEATURES

Networking:  
L-3 OptiNet™ with AT and/or CT  
Field Data Reporting System (FDRS)

Image Archive:  
Images stored for 48 hours

Diagnostics:  
Additional built-in test capabilities  
Enhanced data and service logs  
Integrated service software test suite  
Search Work Stations (SWS) to support trace/physical inspection with 3-D tools  
Brushless data and power transmission

### ENVIRONMENTAL

Operating Temperature:  
0°C to 40 °C

Storage Temperature:  
-20°C to 70 °C

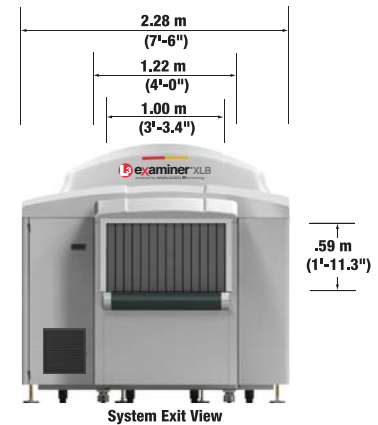
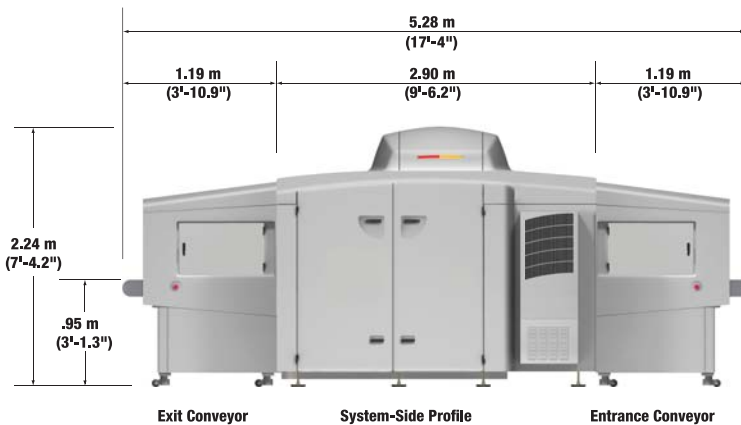
Relative Humidity:  
10 to 90%, non-condensing

### RADIATION SAFETY

All L-3 Communication Security & Detection Systems' X-ray systems comply with all international standards for radiation safety requirements and external emissions limits including the United States Code of Federal Regulations, Title 21, Section 1020.40 (21 CFR 1020.40) that apply to our products.

### OPERATIONAL STANDARDS

Complies with published international standards including the U.S. Federal Aviation Administration Standards, "Use of X-ray Systems" (Federal Standards 14 CFR 108.17 and 14 CFR 129.26).



\*System dimensions are rounded to the nearest decimal.



## Security & Detection Systems

Website: [www.L-3com.com/sds](http://www.L-3com.com/sds)  
Email: [inforequest.sds@L-3com.com](mailto:inforequest.sds@L-3com.com)

USA: Tel: +1 781 939 3800, Toll Free: 1 800 776 3031 (US only)  
United Kingdom: Tel: +44 (0) 1344 477900  
Asia: Tel: +86 10 5976 1616  
Australia: Tel: +61 3 8645 4500  
Middle East: Tel: +971 4 609 1906

L-3 has made all reasonable efforts to ensure that the information in this document is accurate and complete, and disclaims any and all warranties for such accuracy and completeness, and is proprietary. This brochure consists of L-3 Communications Corporation general capabilities information that does not contain controlled technical data as defined within the Export Administration Regulations (EAR) Part 734.7-11.